

Grow&Flow

Biological Fungicide + Plant Growth Promoter + Dry Seed Finisher

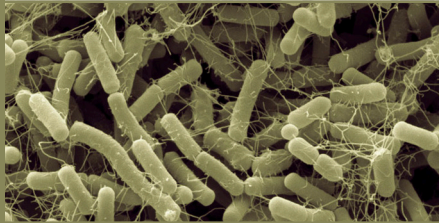
February 2025

www.KaloSeedCare.com

Offering of Dry Custom Blended Seed Treatments Containing EPA Registered Bio-Fungicide Along with Choice of Dry Seed Finisher

GROW

FEATURING BELLA TROVE
COMPANION® MAXX ST
BIOLOGICAL FUNGICIDE AND
PLANT GROWTH PROMOTER



Beneficial bacteria in a powdered dormant form are applied to seeds; the bacteria awakens from dormancy and grows once the seed is planted.

Living bacteria infect the plant and grow in a symbiotic relationship to protect and help the plant grow.

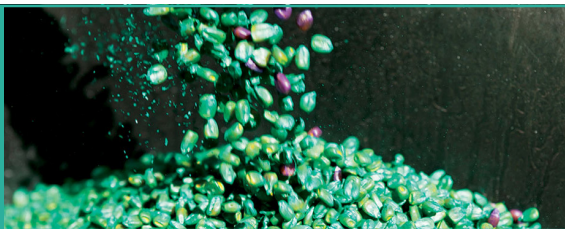
The bacteria trigger natural plant defense mechanisms and form a film on the roots that shields them from infection of pythium, fusarium, and rhizoctonia. The protective film also aids the uptake of nutrients, resulting in promoted plant growth.

The bio-fungicide provides a supplemental mode of action for diseases like pythium with developing resistance to hard chemistries.

SIMPLE, ORGANIC AND EFFECTIVE.

FLOW

FEATURING PIZAZZ®
AND SLIX™ DRY SEED
COAT FINISHERS



Pure, fine, powdered, and coated mica rock is applied to the seed following liquid seed treatment.

The powder aids in drying and sealing of the liquid treatment in a smooth shiny finish.

The naturally based seed finishing powder is an excellent carrier for the organic concentrated biological fungicide.

Seed treated with dry finishing powder flows better through seed handling equipment, seeding drills, and planters.

Better flow leads to improved singulation, fewer skips & doubles, and fewer planter monitor alarms when it matters most.

In-field hopper box applications with talc can be eliminated with commercially applied dry seed finishers with superior coverage and application performance upon the seed.

FOR TREATED SEED THAT SHINES, FLOWS, AND PLANTS BETTER.

TARGET SEEDS

Grow & Flow custom blended dry seed treatment is for use on soybean seed and corn seed.

BENEFITS

DRY SEED FINISHERS

- Treated seed plants better
- Fewer skips and doubles
- Lessens bridging and improves flowability
- Fewer in-field issues
- Eliminates need for talc (Pizazz)
- Eliminates need for talc and graphite (SLIX)

BIOLOGICAL FUNGICIDE

- Suppresses plant disease
- Protects from soil-borne diseases
- Stimulates plants natural defenses
- Enhances crop fertility and stress resistance
- Promotes plant growth and overall yield

APPLICATION RATES

SOY-BTP (Pizazz + Companion Maxx ST)
1.00 dry oz/100 lbs of soybean seed
Seeds per Acre: 140,000

SOY-BTS (SLIX + Companion Maxx ST)
1.00 dry oz/100 lbs of soybean seed
Seeds per Acre: 140,000

CORN-BTS (SLIX + Companion Maxx ST)
1.25 dry oz/100 lbs of corn seed
Seeds per Acre: 33,000

PACKAGING

Package Size: Custom to treatment
Origination Point: Russell, KS

REGISTRATIONS

Bella Trove™ Companion® Maxx ST is registered with the EPA and is OMRI Listed for Organic Use.

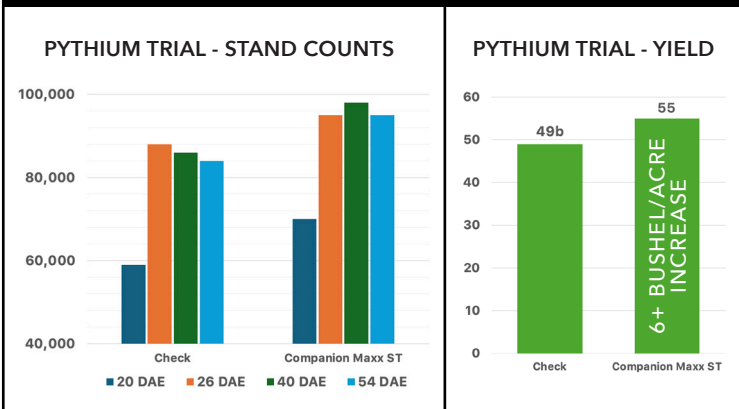
GROUP BM02 FUNGICIDE
EPA REG NO 94485-5



Contact your KALO representative to discuss your seed care needs!
www.KaloSeedCare.com • 800-255-5196 • sales@kalo.com

Distributed by KALO, Inc., Overland Park, KS 66213

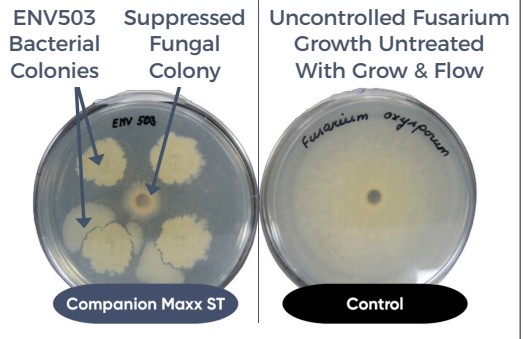
EFFICACY ON PYTHIUM - SOYBEANS



Companion Maxx ST Increased Plant Stand and Yield

DISEASE PROTECTION – FUSARIUM

Metabolites that have antagonistic effects prevent the growth of soilborne pathogens. Bacterial metabolites stop fungal growth. The agar plates below demonstrate antibiotics at work.



Combination of Biological Fungicide and Plant Growth Promoter + Dry Seed Finisher That Helps Seed Flow Better Through the Planter

CHOICE OF THREE CUSTOM BLENDED OFFERINGS

The dry custom blends of bio-fungicide with dry seed finishers improve treated seed flow with all combinations on both soybeans and corn. The dry custom blends perform with all the same dry seed finisher performance expectations of Pizazz and SLIX alone.

FOR SOYBEANS TWO CUSTOM BLENDED OFFERINGS		FOR CORN ONE CUSTOM BLENDED OFFERING
Companion Maxx ST....0.33 oz	Companion Maxx ST....0.33 oz	Companion Maxx ST....0.25 oz
Pizazz..... 0.67 oz	SLIX..... 0.67 oz	SLIX..... 1.00 oz
Custom Blend Total..... 1.00 oz	Custom Blend Total..... 1.00 oz	Custom Blend Total..... 1.25 oz
Item Code: SOY-BTP	Item Code: SOY-BTS	Item Code: CORN-BTS
TYPICAL SOYBEAN YIELD RESPONSE: 2-3 bu		TYPICAL CORN YIELD RESPONSE: 3-5 bu



GROW & FLOW™ is a trademark of Agrilead, Inc. • BellaTrove™ Companion® Maxx ST is a registered trademark of DPH Biologicals KALO, Inc. is the exclusive sales, marketing and distribution source for GROW & FLOW™ • ver. 2/19/2025

KALO | AGRILEAD INC.
SEED CARE PRODUCT STRATEGIC ALLIANCE
KALO is a strategic sales and marketing alliance partner with Agrilead, Inc.

• Our alliance strategy focuses Agrilead upon Product Development and KALO upon Sales & Marketing in an effort to accelerate the innovation and commercialization of advanced seed care technology.

• Bringing the Promise of Every Seed to Life® is the ultimate purpose of our alliance endeavor and the cornerstone for which we seek to build value, growing more crop and business together with the industry.



Contact your KALO representative to discuss your seed care needs!

www.KaloSeedCare.com • 800-255-5196 • sales@kalo.com

Distributed by KALO, Inc., Overland Park, KS 66213